



LAND PLOTS FOR PRODUCTION FACILITIES AND INDUSTRIAL PARKS PLACEMENT



Land plots characteristics	
Total area	More than 1 200 ha
Total number of land plots	More than 70
Intended use	Industrial lands
Mechanism of granting right	
Land plots of communal / state ownership, reserve lands	<ul style="list-style-type: none"> Auction for tenant right. Recourse administrator - municipalities, Dnipropetrovsk Regional State Administration
Land plots, which are leased out	Sub-lease
Industrial Park "Pavlohrad"	Sub-lease
Industrial Park "Kryvbas"	Competition for the management company.
Land plot of more than 15 ha	Ability to create the Industrial Park

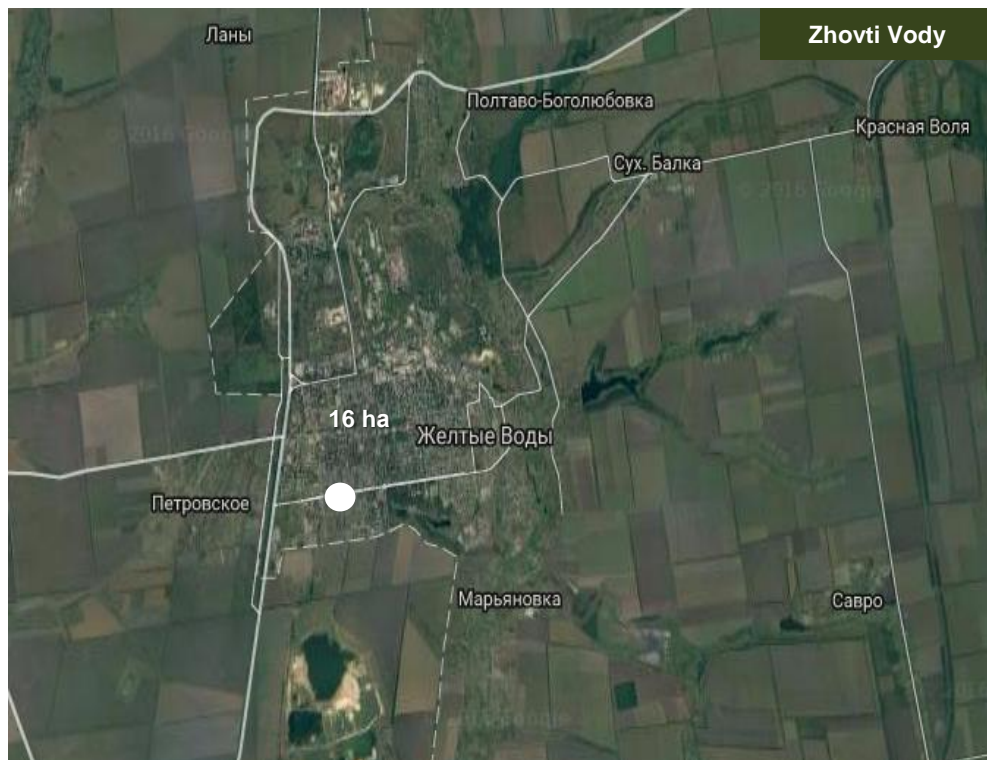
• Request for information.





OFFER FOR PRODUCTION FACILITIES PLACEMENT Zhovti Vody

Land plot for production facilities placement management



Land plots characteristics

Area	16 ha
Project initiator	Zhovti Vody City Council

Engineering infrastructure

Gas supply	Distance to gas distribution substation is 100 m
Water supply	Distance to the nearest connection point is 400 m
Distance from the nearest transport corridor	<ul style="list-style-type: none">• 2 km – railway station “Zhovti Vody-2”;• 0,2 km - distance to the adjacent road.





OFFER FOR PRODUCTION FACILITIES PLACEMENT Vilnohirsk

Land plot for production facilities placement management



Land plots characteristics

Area	22,32 ha
Project initiator	Vilnohirsk City Council

Engineering infrastructure

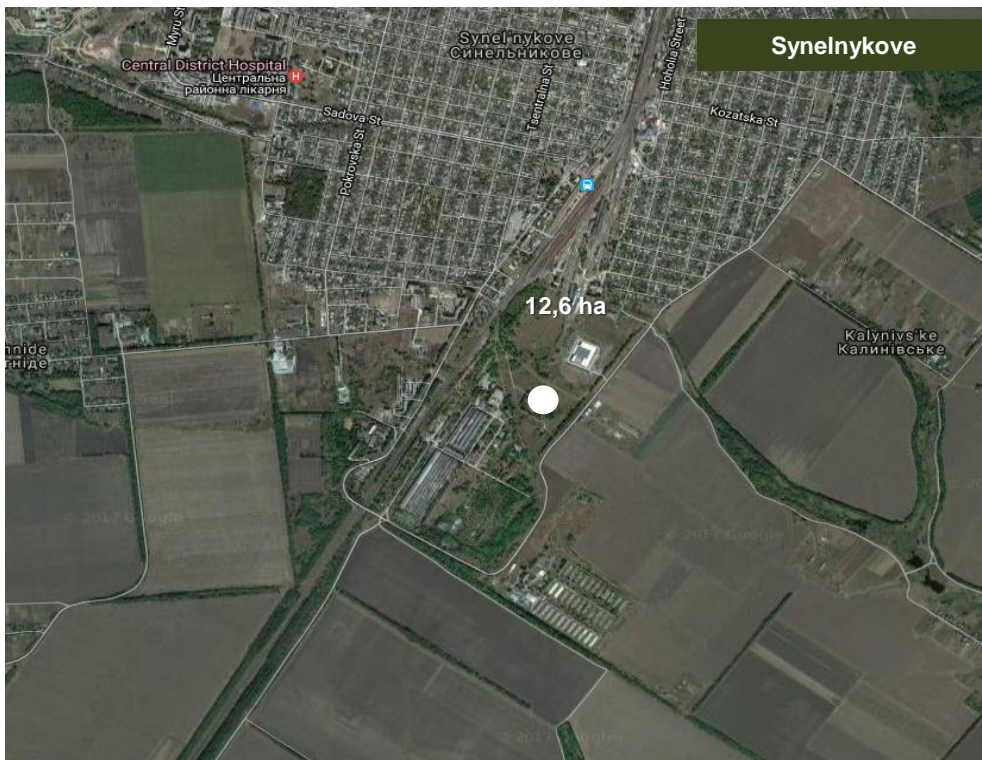
Electricity supply	Distance to the substation is 120 m, power capacity is 10kW
Gas supply	Distance to gas distribution substation is 120 m
Water supply	Distance to the nearest connection point is 100 m
Distance from the nearest transport corridor	<ul style="list-style-type: none">• 700 m - railway station "Vilnohirsk";• 0,1 km – highway T-04-23





OFFER FOR PRODUCTION FACILITIES PLACEMENT Synelnykove

Land plot for production facilities placement management



Land plots characteristics

Area	12,6 ha
Project initiator	Synelnykove City Council

Engineering infrastructure

Electricity supply	Distance to the substation is 0,5 km, power capacity is 35/10 kW
Gas supply	Distance to gas distribution substation is 500 m
Water supply	Distance to the nearest connection point is 500 m
Distance from the nearest transport corridor	0,5 km – highway T 0445





GRAIN TERMINAL FOR THE RIVER – SEA CARRIAGE

Nikopol district

Object information

- **Description:** sale of industrial property / land plot. Possible use: a grain terminal for the river-sea carriage.
- **Object location:** industrial building is located at the entrance of Nikopol, on the shore of the Kakhovka Reservoir 700 m from the highway H-23.
- **Infrastructure:**
 - land plot;
 - Industrial building of 7 500 m² area, including household and office space, refrigeration chamber - 800 m², ceiling height - 5 m, one of the buildings is fitted with two overhead crane, 2 loading docks.
 - The territory is fenced around the perimeter by concrete fence, convenient access for large trucks. The concrete quay with the opportunity of vessels acceptance (18 m in wide), 130 m in length, draught up to 4 m.
- **Total cost of the object : USD 300 thous.**

Owner

- TREID DIL M. Ltd
- **Contact person:** Halyna Savran, tel.: +38 (056) 742 86 34, e-mail: savran.dia@gmail.com



Land plots characteristics

Total area	3,2 ha
Intended use	For placement and operation of the main, subsidiary and auxiliary buildings and structures of other industry enterprises
Cadastral number	1222986000:01:027:0516
Engineering infrastructure	
Water transport infrastructure	quay
Electricity supply	2 transformers 160 kW and 320 kW
Gas supply	Gas pipe line
Water supply	Main water supply line
Distance from the nearest transport corridor	700 m – highway H-23

