

Warehouses and a land plot for industrial production and/or logistics center are offered for rent.

The territory of the facility includes:

- warehouses with an area of 1080 m² used for storage of industrial products;
- land plot with an area of 3.7 ha;
- railway track;
- 8 m wide asphalt-concrete driveway.

Technical specifications

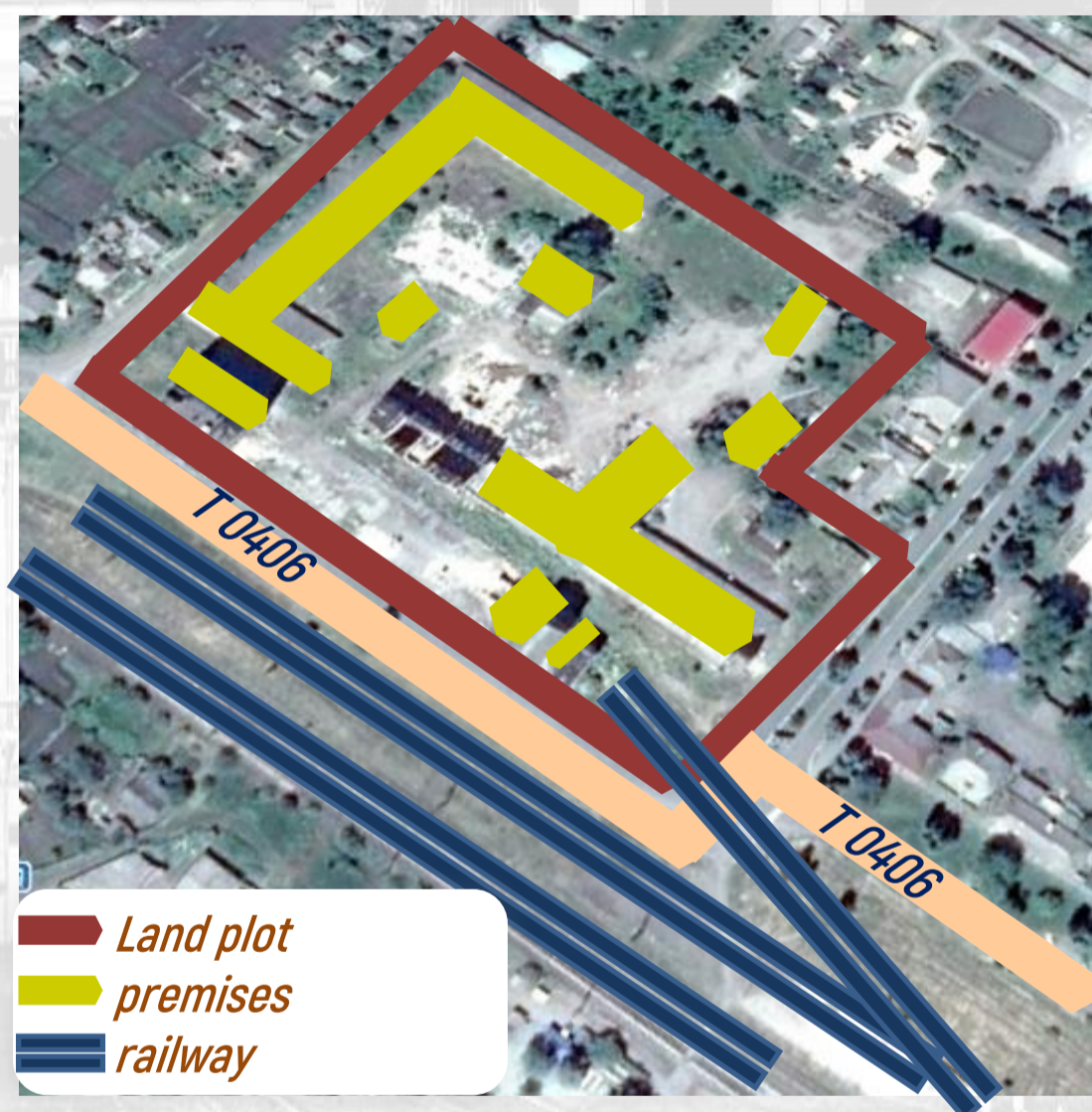
Warehouses	1 080 m²
• length	90 m
• width	12 m
• height	3.5 m

Имеются подключения:	40 kWh
• power supply	20 m ³ /h
• water supply	20 m ³ /h
• water disposal	20 m ³ /h
• gas supply	20 m ³ /h
• internet «Ukrnet»	30 Mbps

Deck	Concrete
Floor	1
Condition of buildings	middle
Office premises	336 m²
Rent for the facility	\$66 m²/year

Land plot

Total area:	3.7 ha
Intended purpose of use	industrial land
Cadastral number:	1222655100:04:003:0001
Land steward	Mezhivska ATC
Rent	from \$1.1 to 1.8 m²/year



Engineering infrastructure of the land plot

Power supply	Substation «Mezhivska 110/35/10» – 1,8 km, (PJSC DTEK "Dniiproblenergo");
Water supply	connection- 0.5 km, (DOC "Mezhivskiyi komunservis");
Water disposal	connection- 0.5 km, centralized;
Gas supply	gas pipeline Ø89 mm, 20 m ³ / h - 1 km; gas distribution station, 100 m ³ / h - 1.8 km.

Initiator:

Mezhivska ATC

www.mezhova.otg.dp.gov.ua

Mechanisms for cooperation:

- Sale/Rental.



Description of the ATC

Land area of the community is 630 km²

Population 15 thous. people

Advantages:

- tax rate on industrial land — **3-5%** of the normative-monetary valuation;
- rental rate on industrial land — **3%** of the normative-monetary valuation ;
- service activities of Administrative Service Centre urban-type settlement Mezhoва.

Economic indicators::

- incomes of the village budget in the amount of **144.5 mln UAH.** (through 2019).
- budget subsidy level is **3%**.
- own income per inhabitant: **4220.3 UAH.** (the average of Ukraine is 3712 UAH.).
- capital expenses per inhabitant: **1133.3 UAH.** (the average of Ukraine is 1243 UAH.).
- average salary: **6395 UAH.**

Vocational education institutions

State vocational education institution "**Mezhova vocational-technical school**".

Fields of training: farm worker, driver, locksmith, accountant, computer typesetter, etc.)

Transport infrastructure:

- Highways: T 0406 — 0.01 km и T 0428 — 2 km (junction E50 and M04);
- The railway track with access to Prydniprovsk railway station "Mezhova" is connected — 0.3 km;
- European highway E50 — 17 km; the city of Dnipro — 170 km.

Location:

Mezhivska ATC, urban-type settlement Mezhoва,
Mezhova district, Dnipropetrovsk region.

Contact information:

**Dnipropetrovsk Regional
Investment Agency (DIA)**

Address: 2, O. Paul Ave, office 538,
the city of Dnipro, Ukraine, 49004

Web: www.dia.dp.gov.ua

Contact person: Halyna Savran

Тел.: +38 056 742 86 34

E-mail: savran.dia@gmail.com



Map of DIA

www.diamap.dia.dp.gov.ua