

Industrial park «KRYVBAS»

Description

Industrial Park «Kryvbas» was created to introduce the highest level of preferences in the implementation of investment projects and ensure economic diversification in the city of Kryvyi Rih.

ПРИОРИТЕТНИЙ ПРОФІЛЬ УЧАСНИКІВ:

- mechanical engineering and metalworking;
- production of building materials (sanitary ware, cable and conductor products, etc.);
- transport and logistics center;
- information technology (IT) and production based on the use of innovative technologies;
- production and processing of agricultural products;
- repair and service of the equipment (including production of elastomeric materials);
- research activity, production of equipment and facilities for the "green" energy industry.

Initiator

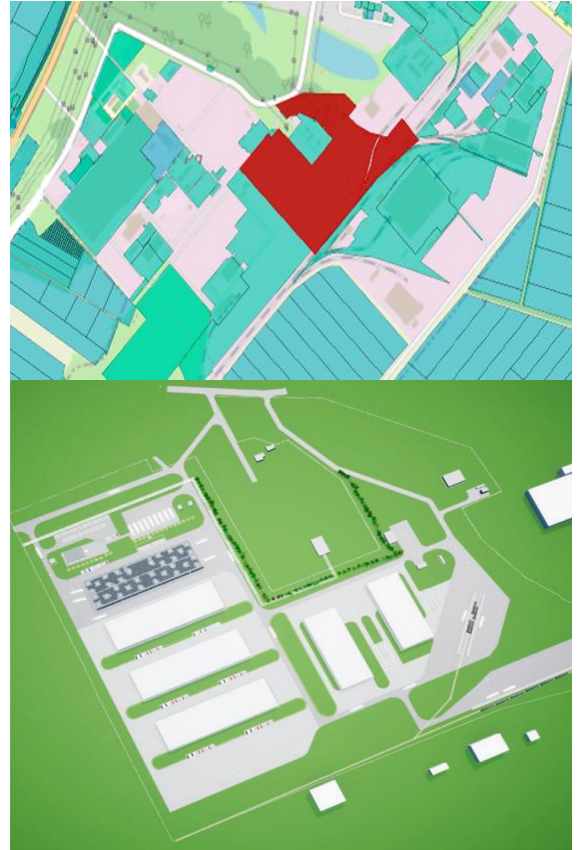
Kryvyi Rih City Council
www.ig.krmisto.gov.ua

Goals

- attracting investments and diversification of the city of Kryvyi Rih economy;
- creation of new industrial productions using innovative, energy-saving and environmentally friendly technologies;
- creation of approximately 1 300 jobs;
- development of innovative hightech and science-intensive sectors of the economy.
- increasing the competitiveness of the area.
- development of modern production and market infrastructure.
- increase in revenues to the budgets of all levels.

Industrial park Management Company

CE «Kryvyi Rih city development institution»



Economic indicators

City budget.

The city funds submittals and constructs management buildings and bomb shelters, while arranging engineering and transport infrastructure.

Benefits and discounts on land tax (a preferential rate of land tax of 0.001% has been established).

Industrial park's participants.

Future residents of the industrial park are expected to attract funds to the city economy in the amount of up to **EUR 42M**.

Industrial park is established for the **30 years** period (2013 – 2043 years).

Industrial park «KRYVBAS»

Technical parameters

Land plot characteristics:

- area: 26,03 ha, with the possibility of expansion by 73 ha;
- buildings and facilities are absent on the land plot;
- **Intended use:** land of industry;
- **cadastral number:** 1211000000:04:381:0056;
- **administrator:** Kryvyi Rih City Council.

Engineering infrastructure:

- **water supply:** capacity: 213 m³/day. Distance from the existing urban water supply system to the boundary of the land plot is 250 m;
- **gas supply:** capacity: 300 m³/h. Distance from the existing gascontrol unit to the boundary of the land plot is 250 m.;
- **electricity supplyCapacity:** 8.45 MW. Distance from the boundary of the land plot is 130 m.

Transport infrastructure:

- Municipal Enterprise «Kryvyi Rih International Airport» of Kryvyi Rih City Council – 35 km;
- roads of national importance:
 - H11 (Dnipro – Mykolayiv (through Kryvyi Rih) – 5.5 km;
 - H23 highway of national significance (Kropyvnytskyi – Kryvyi Rih – Zaporizhzhia) – 11.5 km.
- regional highway:
 - P-74 – 1 km;
 - T0434 – 0.8 km.
- railway station «Kryvyi Rih - Sortuvalnyi» – 2 km

Mechanisms for cooperation

Cooperation business agreement within the industrial park (lease).

Additional information

Project current status:

- the project concept has been approved.
- geological-engineering and geodeticengineering works were carried out on the land plot.
- a preliminary feasibility study has been developed.

Location:

the city of Kryvyi Rih, Dnipropetrovsk region.



CE «Kryvyi Rih city development institution»

Web: <http://irm.kr.ua/>

Tel.: +38 068 485 99 19,
+38 067 181 87 26

E-mail: cdi.irm@gmail.com

Dnipropetrovsk Regional Investment Agency (DIA)

Address:

2, O. Paul Ave, office 538
the city of Dnipro, Ukraine, 49004

Web: www.dia.dp.gov.ua

Contact person: Halyna Savran

Tel.: +38 056 742 86 34

E-mail: savran.dia@gmail.com

Scan for additional information:

