



[www.dia.dp.gov.ua](http://www.dia.dp.gov.ua)

# INDUSTRY

---

8 proposals



<b>Creation of industrial and logistic center (Slobozhanska TC)</b>	<b>1</b>
<b>Construction of a dairy processing plant (Pokrovska TC, the village of Pokrovske)</b>	<b>3</b>
<b>Creation of armed concrete and ceramic products production</b> (Pokrovska TC, the village of Pokrovske)	<b>5</b>
<b>Construction of wind power plant (Pokrovska TC, the village of Levadne)</b>	<b>7</b>
<b>Creation of industrial production — conveyor belts</b> (Nikopol city council, the city of Nikopol)	<b>9</b>
<b>Creation of industrial production — cardboard, corrugated cardboard</b> (Lozovatka village council, Kryvyi Rih district)	<b>11</b>
<b>Creation of industrial production — abrasive materials</b> (Pavlohrad city council, the city of Pavlohrad)	<b>13</b>
<b>Creation of industrial production — truck tires for agricultural and special equipment</b> (Kryvyi Rih city council, the city of Kryvyi Rih)	<b>15</b>



### Creation of industrial and logistic center Slobozhanska TC

#### Proposal description

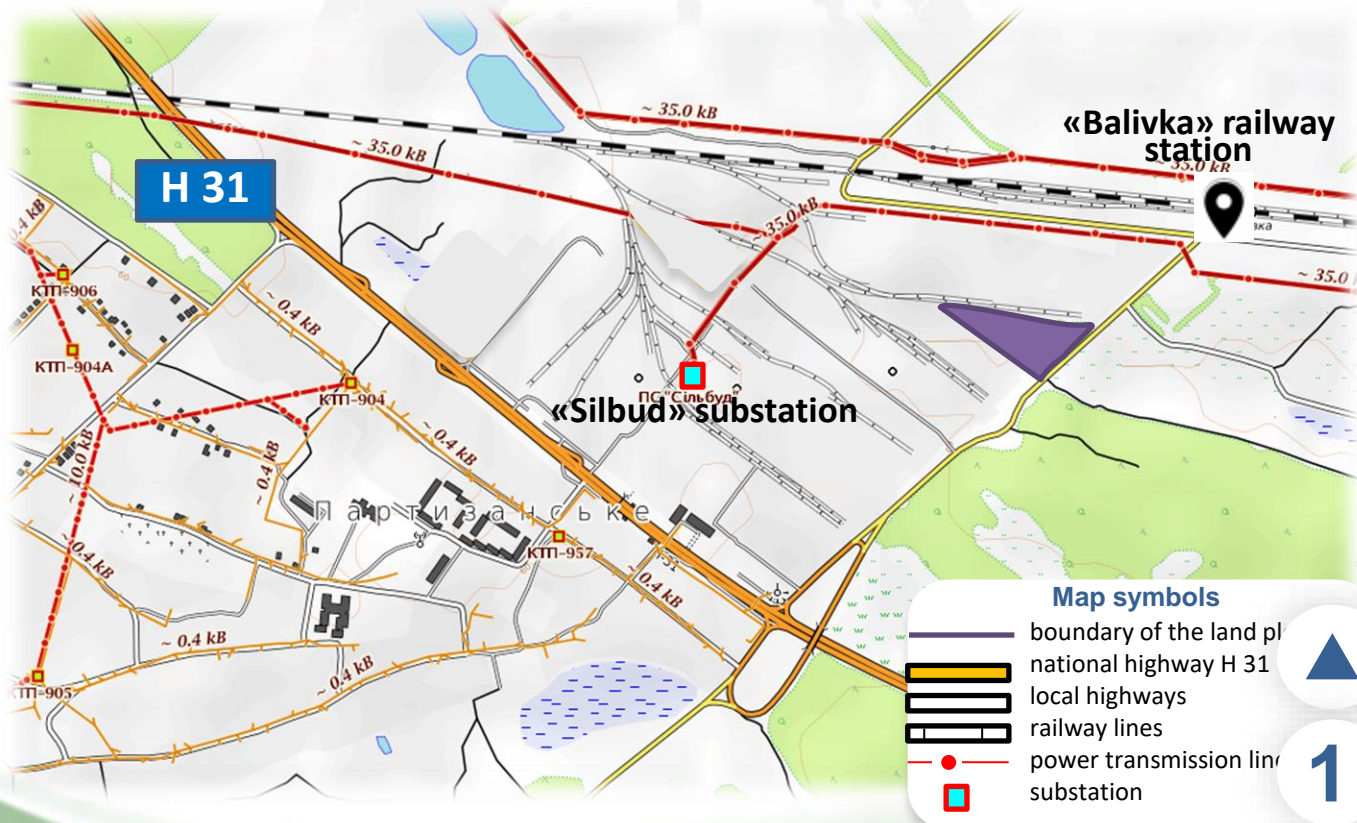
**Slobozhanska community offers a land plot located in the village of Partyzanske** for creation of industrial and logistic center or other enterprise in the field of industry, agro-industrial complex, logistics.

#### Land plot characteristic:

- **area:** 2,86 ha;
- **intended purpose of use:** for the construction and maintenance of other public buildings  
(there is a possibility of changing the intended purpose of use of the land plot up to 6 months);
- **cadastral number:**  
1221486600:01:006:0009
- **leaseholder:** Slobozhanska TC.



#### Land plot layout:

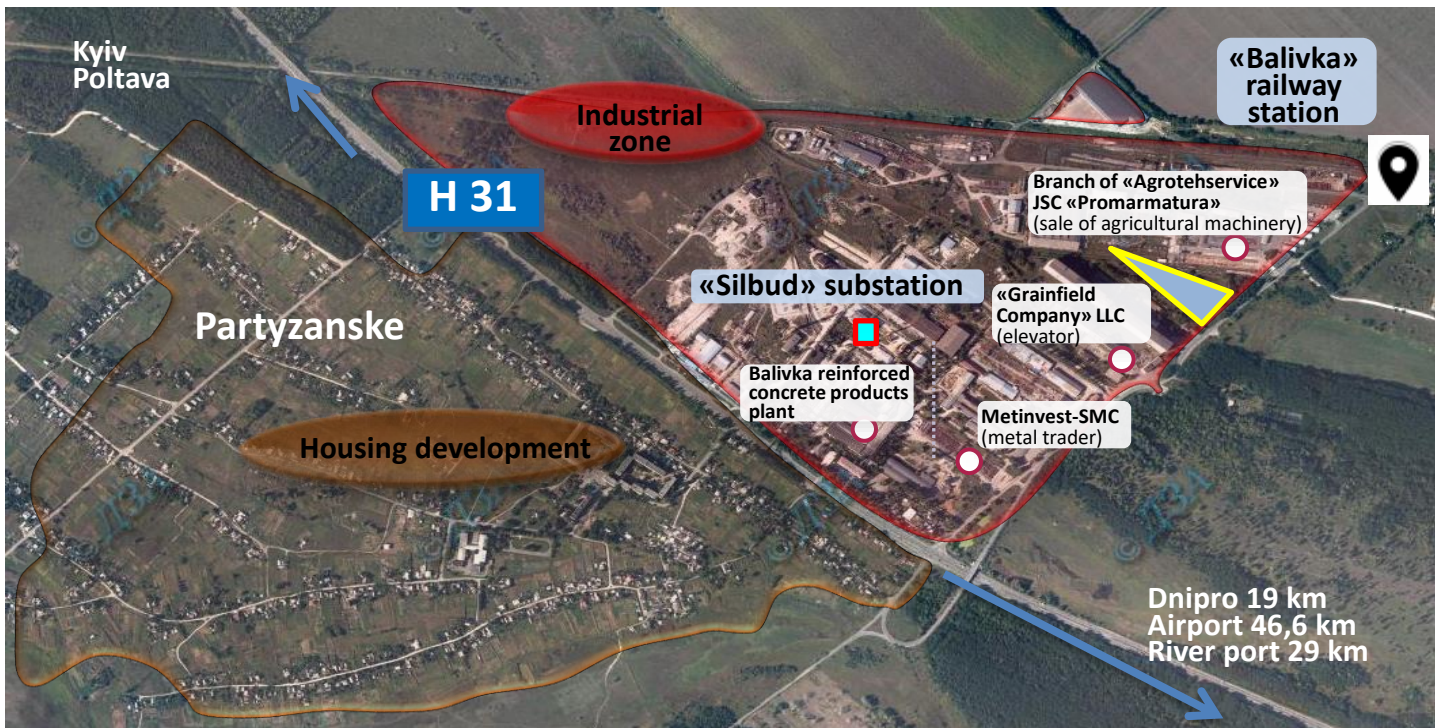






## Creation of industrial and logistic center Slobozhanska TC

Engineering and transport infrastructure



- **Power supply**, service provider – joint-stock company «DTEK Dnipro grids», at a distance of  $\approx 220$  m - «Silbud» 35/10 substation, nominal capacity of  $2 \times 10000$  kVA.
- **Water supply/disposal**, n/a, can be provided by well drilling.
- **Gas supply**, distance to operating gas-distributing plant - 500 m, reserve capacity of  $3708,87 \text{ m}^3$  per hour.

### Distance to main settlements and major highways:

- **600 m** - H 31 m – national highway;
- **approach automotive road** for trucks runs along the north side of the land plot;
- **railway lines** around the land plot;
- **1,5 km** – loading and passenger railway station «Balivka»;
- **46,6 km** - «Dnipro» international airport;
- **19 km** – the city of Dnipro;
- **29 km** - «Dnipropetrovsk» river port;
- **342 km** – Mykolaiv commercial seaport.

### Dnipropetrovsk investment agency

2, O. Paul Ave, office 538, the city of Dnipro, Ukraine, 49004, **Web:** [www.dia.dp.gov.ua](http://www.dia.dp.gov.ua)  
**Tel.:** +38 056 742 86 34, **E-mail:** [savran.dia@gmail.com](mailto:savran.dia@gmail.com), **contact person:** Savran Halyna



## Construction of a dairy processing plant (Pokrovs'ka ATC)

### Proposal description

The community offers a land plot, located in the urban-type settlement of Pokrovs'ke for the construction of a dairy plant to process 5,000 tons of milk per year.

Also, another industrial facility can be created on the proposed land plot, depending on the interests of the investor.

### Proposal initiator

Pokrovs'ka ATC  
[www.pokr.otg.dp.gov.ua/ua](http://www.pokr.otg.dp.gov.ua/ua)

### Proposal goals

- creation of a modern processing enterprise based on raw materials, produced on the territory of the community;
- creation of cooperation ties with local enterprises producing milk and dairy raw materials;
- sale of dairy products in the largest supermarkets in Ukraine, as well as educational institutions of the community;
- creation of 30 additional workplaces;
- increasing tax revenues to the community budget.

### Mechanisms for cooperation

Lease

### Proposal economic indicators

Economic indicators are calculated depending on the project of construction of the milk processing plant



3





## Construction of a dairy processing plant (Pokrovs'ka ATC)

### Land plot technical parameters

#### Land plot characteristics:

- **area:** 18,76 ha (Greenfield);
- **intended purpose of use:** reserve lands;
- **cadastral number:** 1224255100:02:002:1876;
- **leaseholder:** Pokrovs'ka ATC.

#### Engineering infrastructure:

**Water supply/disposal** – n/a, distance to the functional water pipe – 0,3 km, to the delivery pipe of water disposal – 0,2 km;

**Gas supply** – n/a, distance to the functional gas pipe line – 0,5 km;

**Power supply** – n/a, nearest electrical substation "Pokrovka-150" 150/35/10, with nominal capacity of 2×25000 kVA – 4 km.

#### Transport infrastructure:

- national highway H15 – 1 km;
- international airport «Zaporizhzhia» – 94,1 km;
- the city of Dnipro – 129 km;
- the city of Zaporizhzhia – 96 km.

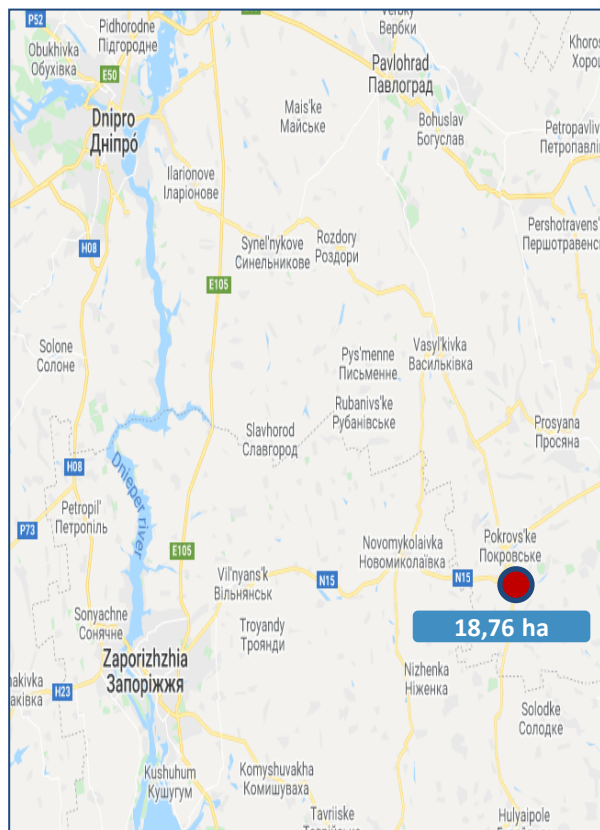
**Neighboring land plots:** pig farm, mill, sawmill, car garage, sedimentation tanks.

### Additional information

The milk and dairy products market is one of the most dynamic sectors of agribusiness. Pokrovs'ka ATC is an example of the successful development of this sector, represented in the community by two large dairy cooperatives: «Dobrobut Andriivky» and Molocharske. The first one harvests an average of 7 tons of milk daily, and the second - up to 2 tons, transporting its products to the «Danone» plant in Kherson. The existing potential of both enterprises allows the products of these cooperatives to be used for high-quality milk processing and the creation of an assortment of end products: sour milk cheese, sour cream, butter, hard cheese, etc.

#### Land plot location:

urban-type settlement Pokrovs'ke, Pokrovs'ka ATC, Pokrovs'ke district, Dnipropetrovsk region.



#### Dnipropetrovsk Regional Investment Agency (DIA)

**Address:** 2, O. Paul Ave, office 538, the city of Dnipro, Ukraine, 49004

**Web:** [www.dia.dp.gov.ua](http://www.dia.dp.gov.ua)

**Contact person:** Halyna Savran

**Tel.:** +38 056 742 86 34

**E-mail:** [savran.dia@gmail.com](mailto:savran.dia@gmail.com)



### Production of armed concrete and ceramic products (Pokrovs'ka ATC)

#### Description of the proposal

The community offers a land plot to create the production of armed concrete and ceramic products on the basis of minerals extracted on the territory of ATC. The nomenclature and characteristics of minerals allow to consider the specified land plot for placement of production of sheet glass.

Also, another industrial facility can be created on the proposed land plot, depending on the interests of the investor.

#### Initiator of the proposal

Pokrovs'ka ATC  
<https://pokr.otg.dp.gov.ua/ua>

#### Proposal goals

- extension of economic activities of community enterprises;
- optimal utilization of natural and labor resources;
- production of armed concrete and ceramics, development of the community construction sector;
- creation of cooperative ties between construction, industrial and mining enterprises of the region;
- providing quality products and services to customers;
- use of logistical possibilities of the railway station «Mechetna» for transportation of products from armed concrete;
- increasing tax revenues to the community budget.



#### Mechanisms for cooperation

Sale, lease through auction

#### Proposal economic indicators

Economic indicators are calculated depending on the project of construction of a production line armed concrete products



## Production of armed concrete and ceramic products (Pokrovs'ka ATC)

### Land plot technical parameters

#### Land plot characteristics:

- area: 7,96 ha;
- intended purpose of use: reserve lands;
- cadastral number: 1224255100:01:009:7961;
- leaseholder: Pokrovs'ka ATC.

#### Engineering infrastructure:

**Water supply/water disposal**– n/a;

**Gas supply** – operating gas pipeline with medium pressure– 0,1 km;

**Power supply** – substation «Mechetna» 10/04 kV – 1,4 km.

#### Transport infrastructure:

- national highway H15 – 2,9 km;
- international airport «Zaporizhzhia» – 91,9 km;
- the city of Dnipro – 126 km;
- the city of Zaporizhzhia – 96,1 km.

**Neighboring land plots:** railway station «Mechetna», automatic gas filler, stud farm, elevator, Pokrovs'ke Auto-Transport Enterprise.

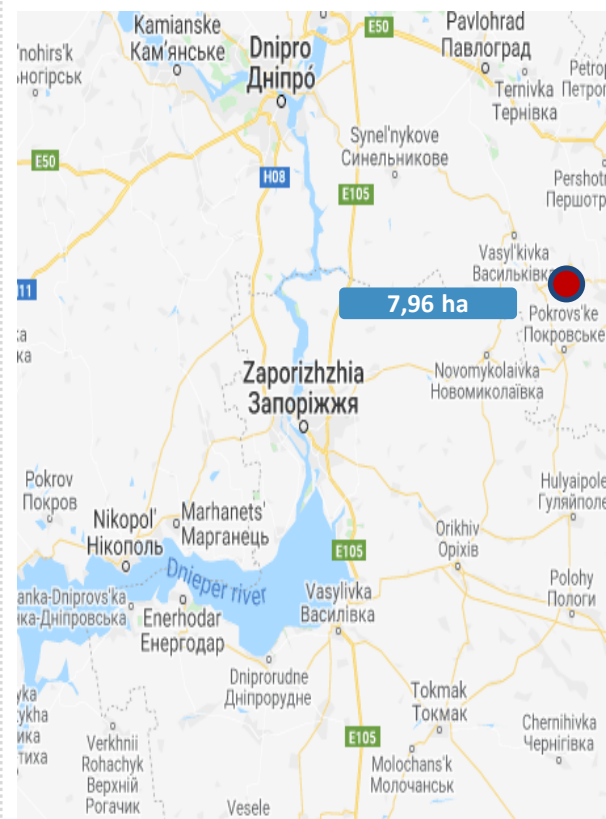
### Additional information

Armed concrete products are durable. It is noteworthy that over time, the concrete only gets stronger. If during the construction of a building made of such material does not exceed the allowable loads, it will be able to stand for many decades. Armed concrete is strong, resistant to cracking, not prone to corrosion, able to withstand large changes in temperature. It can be used to make various road slabs, columns and piles, bridges and arches, etc. These materials can be prefabricated and prefabricated monolithic. There are also monolithic products made directly on the construction site.

Armed concrete is a profitable combination of the advantages of concrete and steel reinforcement and provides mutual compensation for the disadvantages of these materials. Separately, the reinforcement increases the tensile strength of armed concrete.

#### Land plot location:

urban-type settlement Pokrovs'ke, Pokrovs'ka ATC, Pokrovs'ke district, Dnipropetrovsk region.



#### Dnipropetrovsk Regional Investment Agency (DIA)

**Address:** 2, O. Paul Ave, office 538, the city of Dnipro, Ukraine, 49004

**Web:** [www.dia.dp.gov.ua](http://www.dia.dp.gov.ua)

**Contact person:** Halyna Savran

**Tel.:** +38 056 742 86 34

**E-mail:** [savran.dia@gmail.com](mailto:savran.dia@gmail.com)







## Construction of wind power plant (Pokrovs'ka ATC)

### Description of the proposal

The community offers a land plot located outside the territory of the urban-type settlement Pokrovs'ke for the construction of wind plant.

Also, another industrial facility can be created on the proposed land plot, depending on the interests of the investor.

### Initiator of the proposal

Pokrovs'ka ATC

<https://pokr.otg.dp.gov.ua/ua>

### Proposal goals

- creation of an industrial facility with renewable energy;
- use of wind energy potential of the region;
- improving the environmental situation in the region by reducing emissions from coal-fired power plants and other minerals;
- increasing the share of renewable energy in the energy sector of the region;
- development of the wind energy market;
- creation of industrial production on the basis of renewable energy;
- increasing tax revenues to the community budget.



### Mechanisms for cooperation

Lease through auction

### Proposal economic indicators

Economic indicators are calculated depending on the project of construction of wind power plant



## Construction of wind power plant (Pokrovs'ka ATC)

### Land plot technical parameters

#### Land plot characteristics:

- **area:** 92 ha;
- **intended purpose of use:** reserve lands;
- **cadastral number:** 1224255100:01:009:9209;
- **leaseholder:** Pokrovs'ka ATC.

#### Engineering infrastructure:

**Water supply/water disposal** – n/a;

**Gas supply** – gas-distributing plant with reserve capacity of 7,800 cubic meters per hour – 1 km;

**Power supply** – substation «Mechetna» 10/04 kV – 1,7 km.

#### Transport infrastructure:

- national highway H15 – 3 km;
- international airport «Zaporizhzhia» – 95 km;
- the city of Dnipro – 126 km;
- the city of Zaporizhzhia – 96,2 km.

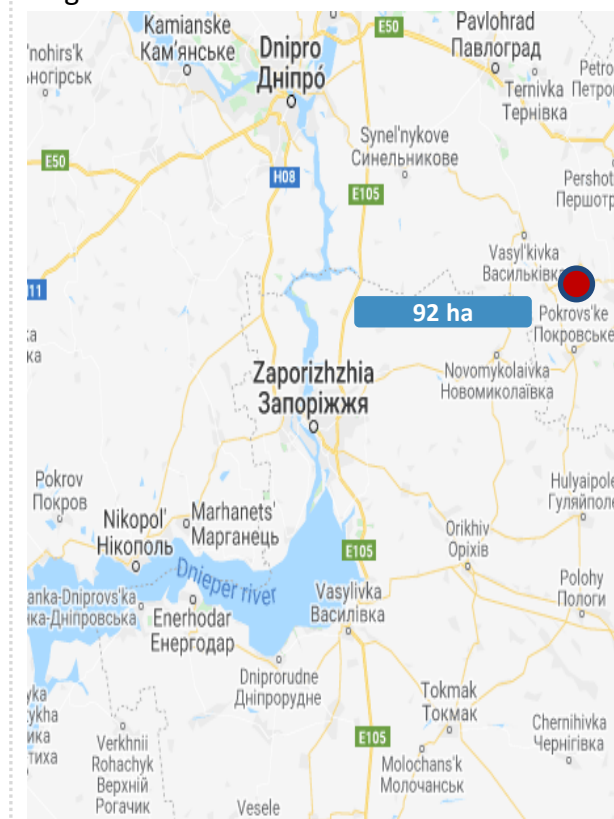
**Neighboring land plots:** railway station «Mechetna», automatic gas filler, stud farm, elevator, Pokrovs'ke Auto-Transport Enterprise.

### Additional information

Among renewable energy sources in 2017, wind power plants in Ukraine generated 52.1% of electricity. Strengthening investor confidence and a transparent procedure for the regulator to allocate a «green» tariff to new projects have led to positive changes in «clean» energy. The economic potential of wind energy based on satellite data and climate models is estimated by the International Renewable Energy Agency (IRENA) at 119 GW, while current capacity of all types of power plants in the country is 54 GW. Today, Ukrainian entrepreneurs who used to deal with gas and coal are already switching to financing wind projects. Wind energy creates new jobs and reduces the consumption of coal and natural gas, and with them our energy dependence and the harmful effects of energy on the environment.

#### Land plot location:

the village of Levadne, Pokrovs'ka ATC, Pokrovs'ke district, Dnipropetrovsk region.



#### Dnipropetrovsk Regional Investment Agency (DIA)

**Address:** 2, O. Paul Ave, office 538,  
the city of Dnipro, Ukraine, 49004

**Web:** [www.dia.dp.gov.ua](http://www.dia.dp.gov.ua)

**Contact person:** Halyna Savran

**Tel.:** +38 056 742 86 34

**E-mail:** [savran.dia@gmail.com](mailto:savran.dia@gmail.com)



## Industrial production – conveyor belts\* Nikopol City Council

### Project technical parameters

#### Land plot characteristics:

- **area:** 9.59 ha, Green-field;
- **intended use:** industrial land;
- **cadastral number:** is not available;
- **administrator:** Nikopol City Council (communal property).

#### Engineering infrastructure:

- **water supply:** potential connection to the nearest water supply point – 0.1 km;
- **water discharge:** connection to local sewerage network;
- **gas supply:** operating gas pipeline – 0.3 km, compressor station – 0.01 km;
- **electricity supply:** connection to electrical substation:
  - substation – 0.05 km;
  - substation «Nikopolska-150» 150/35/6 kW – 1.3 km.

#### Transport infrastructure:

- **distance to the nearest transport corridors:**
  - railway station «Nikopolstroi» – 3.6 km,
  - railway station «Tsentralna» – 1.9 km,
  - national highway H-23 – 0.5 km,
  - the Dnieper river – 2 km.

### Form of land plot transfer

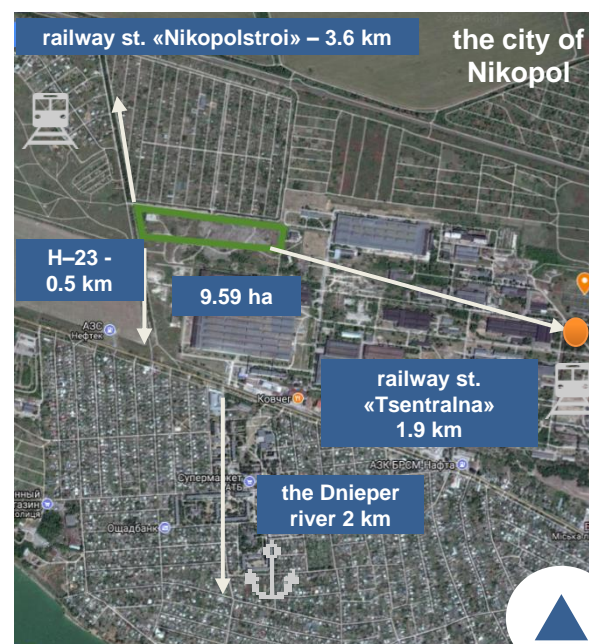
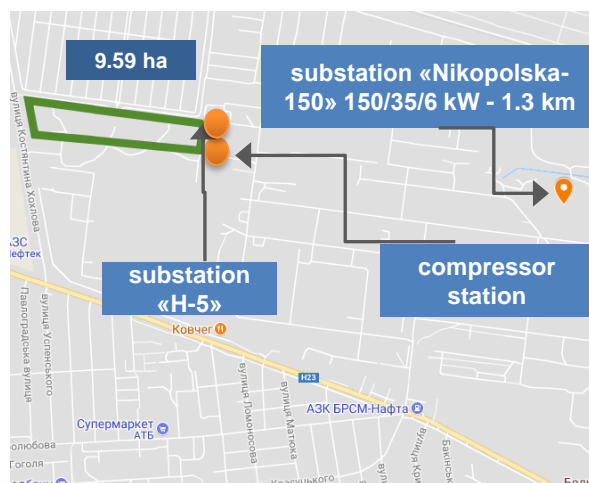
Auction (for sale, for rent)

### Neighboring land plots:

State Enterprise «Nikopol Pipe Plant» (manufacture of pipes and fittings for steel pipes), gardening company «Trybnyk-2».

#### Project location:

56, Trybnykiv Ave., the city of Nikopol, on the territory of the State Enterprise «Nikopol Pipe Plant».



\*The offered territory can also be used for placing construction materials production.





## Industrial production – conveyor belts\* Nikopol City Council

### MARKET REVIEW

The conveyor belts market is attractive for investments, it is about **9.5 thousd. tons** per year (\$ 73.2 mln), of which **65 tons** (\$ 0.5 mln) are domestic products. Import of the conveyor belt reaches almost **100 %** (9.4 thousd. tons per year (\$ 72.7 mln).

Conveyor belt is widely used in the mining and agricultural industries for the transportation of piece, bulk and packaged cargoes.

Domestic production of the conveyor belt in Ukraine is represented by one enterprise: BERTI PJSC, the rest of the production is compensated by import, mainly from Poland (\$ 14 mln), Germany (\$ 12 mln) and China (\$ 6 mln).

### Conveyor belts

**The market of Ukraine:** \$ 73.2 mln

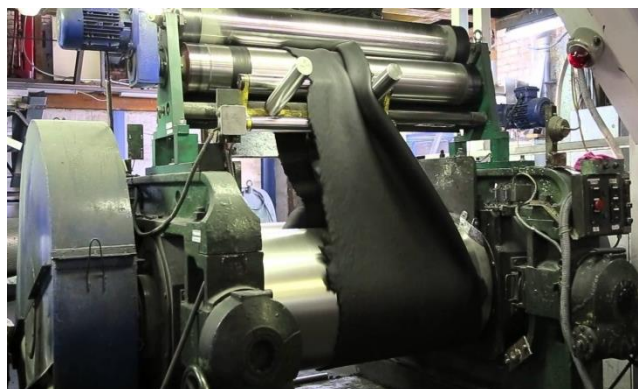
Production \$ 0.5 mln

Import: \$ 72.7 mln (99.3%)

**Consumers:** coal mining enterprises,  
mining and processing plant.

**Core enterprises:**

- Private research and production enterprise «Metalyrgmashremont».



**Dnipropetrovsk Regional  
Investment Agency (DIA)**

**Address:** 2, O. Paul Ave, office 538,  
the city of Dnipro, Ukraine, 49004

**Web:** [www.dia.dp.gov.ua](http://www.dia.dp.gov.ua)

**Contact person:** Halyna Savran

**Tel.:** +38 056 742 86 34

**E-mail:** [savran.dia@gmail.com](mailto:savran.dia@gmail.com)

**Industrial production –  
cardboard, corrugated cardboard\***  
Kryvyi Rih district



### Project technical parameters

#### Land plot characteristics:

- **area:** 7 ha, Brown-field;
- **intended use:** industrial land;
- **cadastral number:** 1221884000:02:001:0479;
- **Administrator:** Dnipropetrovsk Regional State Administration.

#### Engineering infrastructure:

- **water supply:** provided with a drinking water supply system;
- **water discharge:** connection to local sewerage network;
- **gas supply:** connection to the existing gas pipeline – 1 km;
- **electricity supply:** connection to substation:
  - substation 150/6 kW – 0.8 km;
  - substation 150/6 kW – 0.2 km.

#### Transport infrastructure:

- **distance to the nearest transport corridors:**
  - railway station «Hrekuvata» – 1 km;
  - national highway H-23 – 8 km, T-0434 – 12 km;
  - airport «Kryvyi Rih» – 20 km;
  - the Inhulets river – 3 km.

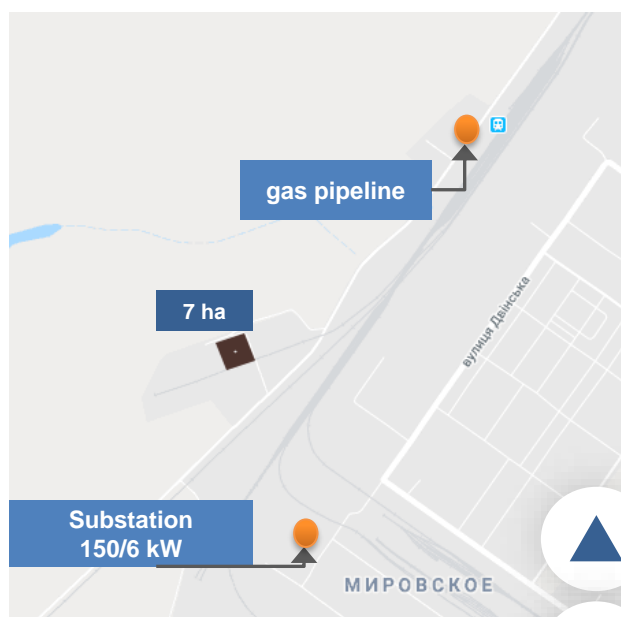
### Form of land plot transfer

Auction (for sale, for rent)

### Neighboring land plots:

- industrial production zone of «Granite Group», Ltd (main activity: mining of stone, limestone, plaster stone, chalk stone and clay-slate);
- industrial production zone of «Naftatrasservice», Ltd (accommodation storage of fuels and lubricants);
- land shares for conducting commercial agricultural production and multiple purposes land plots.

**Project location:** Lozovatka village council, Kryvyi Rih district, Dnipropetrovsk region.



*\*The offered territory can also be used for placing construction materials production, agricultural products processing or logistics center..*

## Industrial production – cardboard, corrugated cardboard\* Kryvyi Rih district



### MARKET REVIEW

The cardboard and corrugated cardboard market in Ukraine is more than **1.9 mln tons** per year (\$ 1492.6 mln), of which **808 thousd. tons** (\$ 633 mln)– are domestic products, the rest are compensated by import, which is **1.1 mln tons** (\$ 859, 6 mln).

According to experts, the food industry consumes more than 60% of all produced corrugated cardboard. It is quite actively used by pharmaceutical enterprises and manufacturers of household chemical goods, as well as traditionally, corrugated packaging goes to the needs of the tobacco, perfume and glass industries - up to 16% of the output.

Thus, corrugated cardboard is a commodity of the B2B market (business to business). Traditionally, such goods are sold in large quantities under long-term contracts to manufacturing companies customers.

The Ukrainian cardboard and corrugated cardboard market is sufficient to provide new production, because **import exceeds 57.6%**.

### Cardboard, corrugated cardboard

**The market of Ukraine:** \$ 1 492.6 mln

Production: \$ 633 mln

Import: \$ 859.6 mln (57.6%)

**Consumers:** enterprises of packaging production, trade and industrial enterprises

**Core enterprises:**

- «Ekopromservis», Ltd
- «PakStandart», Ltd
- «UkrKarton», Ltd.



**Dnipropetrovsk Regional  
Investment Agency (DIA)**

**Address:** 2, O. Paul Ave, office 538,  
the city of Dnipro, Ukraine, 49004

**Web:** [www.dia.dp.gov.ua](http://www.dia.dp.gov.ua)

**Contact person:** Halyna Savran

**Tel.:** +38 056 742 86 34

**E-mail:** [savran.dia@gmail.com](mailto:savran.dia@gmail.com)



## Industrial production – abrasive materials\*

Pavlohrad City Council



### Project technical parameters

#### Land plot characteristics:

- **area:** 15 ha, Green-field;
- **intended use:** recreational zone (it is possible to change the intended purpose of use of the land by the leaseholder to industrial land, provided that a detailed plan of the territory is developed (1 year 6 months). It is also necessary to use artificial dewatering);
- **cadastral number:** is not available;
- **administrator:** Pavlohrad City Council (communal property).

#### Engineering infrastructure:

- **water supply:** potential connection to the nearest water supply point – 300 m;
- **water discharge:** centralized connection – 80 m, Ø 300 mm;
- **gas supply:** distance to the operating gas pipeline – 10 m, Ø 76 mm, low power;
- **electricity supply:** distance to the operating power transmission lines 35/10 kW – 10 m, to the transformer substation – 100 m.

#### Transport infrastructure:

- **distance to the nearest transport corridors:**
  - railway station «Pavlohrad-1» – 0.2 km;
  - European route E50 – 2.5 km;
  - regional highway P-51 – 0.6 km, T0422 – 0.85 km;
  - the Vovcha river – 1.7 km.

### Form of land plot transfer

Auction (for sale, for rent)

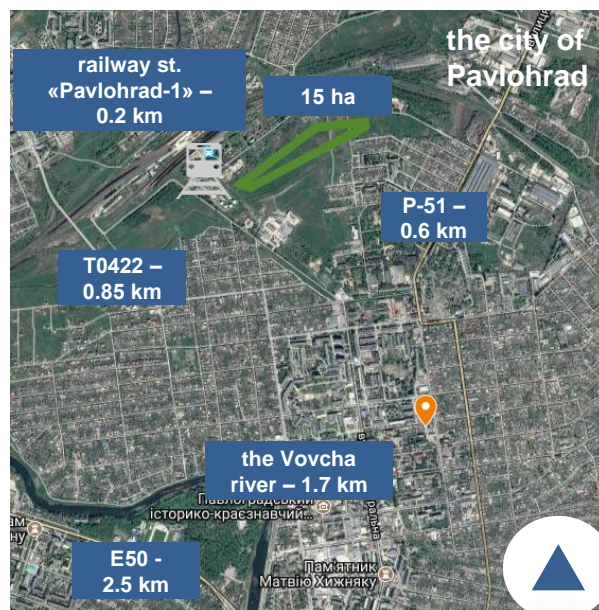
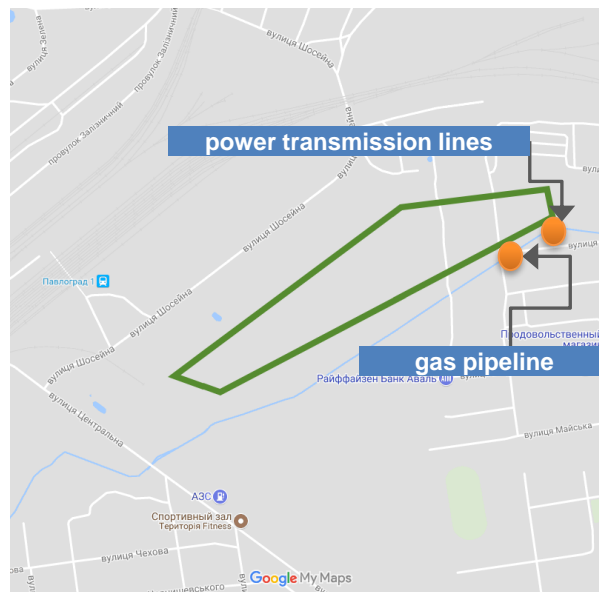
### Neighboring land plots:

Pavlohrad oil tank farm «Dnipronaftoprodukt» PJSC, petrol-filling station «Naftatorh», railway station «Pavlohrad-1», public buildings, garage cooperative «Avtoluibytel-3».

\*The offered territory can also be used for placing construction materials production, agricultural products processing or logistics center.

### Project location:

Shoseina Str., the city of Pavlohrad,  
Dnipropetrovsk region.



**Industrial production –  
abrasive materials\***

Pavlohrad City Council

**MARKET REVIEW**

The market of abrasive materials in Ukraine is also considered interesting. It is more than **15 thousd. tons** per year (\$ 42.4 mln) of which **7.3 thousd. tons** (\$ 13.8 mln) are domestic products, the rest is compensated by imports, which is **8.4 thousd. tons** (\$ 28.6 mln).

The main consumers of abrasive materials are the construction industry, the wood and metal-processing industries, as well as power tools manufacturers.

According to expert research, the global market for abrasive materials will grow to **more than \$ 5 bln by 2020**. To gain a competitive advantage, it should be produced innovative materials with an abrasive coating.

The share of abrasives **import** in the Ukrainian market reaches **54%**, which may well provide new production.

**Abrasive materials**

**The market of Ukraine:** \$ 42.4 mln

Production \$ 13.8 mln

Import: \$ 28.6 mln (54%)

**Consumers:** metallurgy and  
engineering enterprises

**Core enterprises:**

- Dniprovsky plant of special equipment and materials
- Prominstrument-D.



**Dnipropetrovsk Regional  
Investment Agency (DIA)**

**Address:** 2, O. Paul Ave, office 538,  
the city of Dnipro, Ukraine, 49004

**Web:** [www.dia.dp.gov.ua](http://www.dia.dp.gov.ua)

**Contact person:** Halyna Savran

**Tel.:** +38 056 742 86 34

**E-mail:** [savran.dia@gmail.com](mailto:savran.dia@gmail.com)



### Industrial production –

Truck tires for agricultural and special equipment\*

Kryvyi Rih City Council



### Project technical parameters

#### Land plot characteristics:

- **area:** 5,4 ha, Green-field;
- **intended use:** industrial land (11.02 – for placement and operation of the main facilities of the processing, engineering and other industries);
- **cadastral number:** 1211000000:04:379:0053;
- **administrator:** Kryvyi Rih City Council (communal property).

#### Engineering infrastructure:

- **water supply:** potential connection to the nearest water point – 0.2 km, pond – 0.25 km;
- **water discharge:** connection to the local sewerage network;
- **gas supply:** the operating gas pipeline – 0.6 km, Ø 400 mm, high power gas distribution station (GDS) – 0.45 km;
- **electricity supply:** connection to substation 35/10 kW – 0.2 km.

#### Transport infrastructure:

- **distance to the nearest transport corridors:** railway station «Rokyvata» – 4.7 km, national highway H-11 – 7 km, regional highway P-74 – 0.1 km и T0434 – 0.1 km.

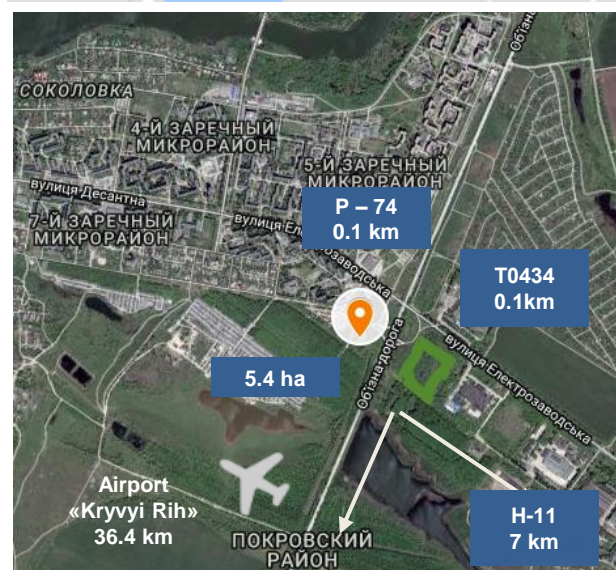
### Form of land plot transfer

Auction (for sale, for rent)

### Neighboring land plots:

#### Project location:

Elektrozavodska Str., the city of Kryvyi Rih, Dnipropetrovsk region.



DTEK DNIPROVSKI ELEKTROMEREZHI, AT (electricity supply), PIRSAN LLC (main activity: leasing of own or leased real estate), partially private property and land not provided for own use, as well as a forest.

*\*\*The offered territory can also be used for placing construction materials production, agricultural processing or logistics center.*



## Industrial production –

Truck tires for agricultural and special equipment\*

Kryvyi Rih City Council

### MARKET REVIEW

The market of truck tires for agricultural and specialized equipment in Ukraine is more than **108 thousd. tons** per year (\$ 558.1 mln), of which **0.6 thousd. tons** (\$ 2.9 mln) are domestic products, the rest is compensated by import and is **107.3 thousd. tons** (\$ 555.2 mln).

According to experts, the volume of truck tires for agricultural and specialized equipment in Ukraine exceeds **108 thousd. tons** per year, which is almost **100% of import**. The indicated volumes correspond to at least two large enterprises for the truck tires production.

Since 2007, the American company EUROTIRE has been working in the region to manufacture truck tires with a diagonal cord for agricultural and specialized machinery.

### Truck tires for agricultural and special equipment

**The market of Ukraine:** \$ 558.1 mln

Production \$ 2.9 mln

Import: \$ 555.2 mln (99.5%)

**Consumers:** enterprises of agricultural sector, mining and processing plant

**Core enterprises:**

- «Ukrainian factory of oversized tires», Ltd.



**Dnipropetrovsk Regional  
Investment Agency (DIA)**

**Address:** 2, O. Paul Ave, office 538,  
the city of Dnipro, Ukraine, 49004

**Web:** [www.dia.dp.gov.ua](http://www.dia.dp.gov.ua)

**Contact person:** Halyna Savran

**Tel.:** +38 056 742 86 34

**E-mail:** [savran.dia@gmail.com](mailto:savran.dia@gmail.com)